

SERVICE INFORMATION

Instructions for approved Pepsi Refurb Centers only.

M126.1

MODELS AFFECTED: All 501E/276E Magnum Circular Models **Revised:** 2/11/15
MODEL NUMBERS: DNCB501E/276E – Magnum Circular SBC & SIID Venders

RE: Crane Merchandising Systems approved Pepsi Refurb Centers 501E/276E Magnum Circular Door Modifications for ADA Compliance Kit instructions.



Models affected: All Pepsi 501E/276E-Model Magnum Circular SBC and SIID Venders.

Reason: To provide over view instructions for the installation of the Pepsi approved kit to make the Subject Venders 2012 ADA compliant. If you have any issues please contact your Crane Merchandising Systems Representative or the Technical Service Department at 803-266-5001.

Note: Kit installation requires a set of 4 drill fixtures available for purchase from Crane Merchandising Systems. These drill fixtures are not included in the kits listed below.

Tools Required (not included in kits):

Drill, .120" (31) drill bit, .185" (13) drill bit, .277" (J) drill bit, .219" (7/32) drill bit, 1.375" hole saw bit, .302" (N) drill bit, .199 (8) drill bit, ¼" socket, 3/8" socket, 7/16" socket, Socket driver, Phillips screw driver, cut off wheel or plasma cutter, Wire tie cutter.

Order: 62901020 ADA 501E Magnum Circular Upgrade Kit, see list of parts included:

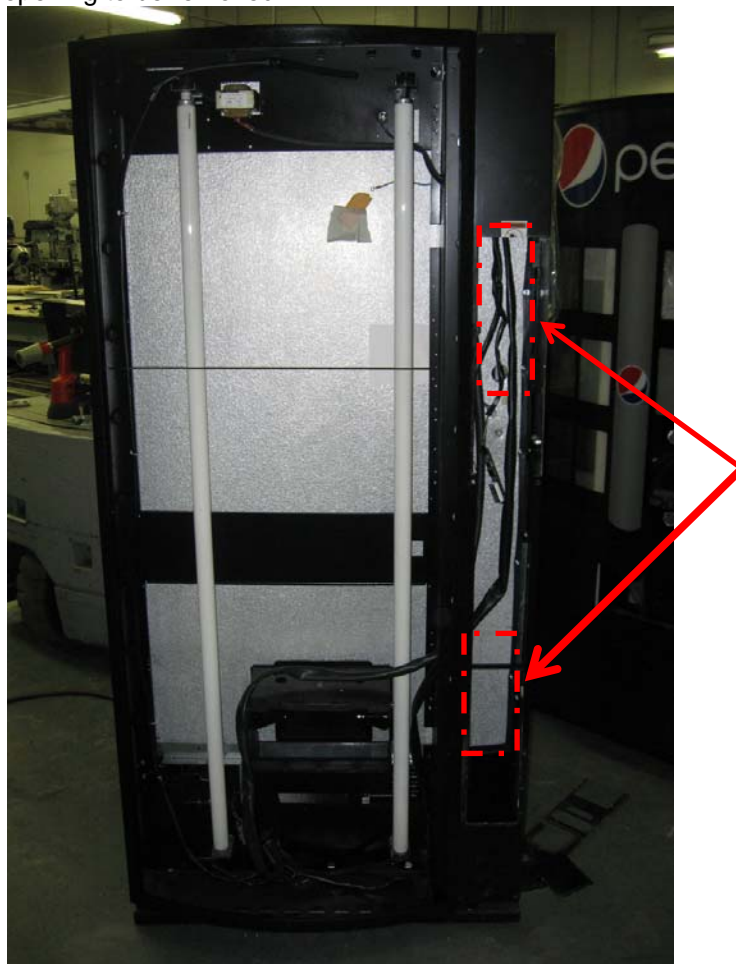
| Description | 62901020 ADA 501E MC Upgrade Kit | QTY |
|---|-------------------------------------|-----|
| 10 Select Mag. Cir. ADA Sign Kit | 62901010 | 1 |
| 10 Select Mag. Cir. Kit includes: Select Harness CR0014891, Select Switches 80410074, Select Buttons 80520283, Select Button Bracket 80010282011, Brace CR0014951, and hardware. | | |
| 501E ADA Mag. Cir. Refurb Kit | 63100760 | |
| 501E ADA Mag. Cir. Refurb Kit Includes: 501E ADA Panel Assy CR0014758, Stop Mech latch bracket assy CR0014802, Nut retainer housing relocation tap plate CR0014780, port riser weld assy CR0014895, cash box shelf support bracket CR0014949, ADA hinge plate CR0014952, ADA cash box hopper CR0014954 and assorted hardware. | | |
| Installation Instructions | M126.x | 1 |

Note: Sign required is not included with kit from Crane Merchandising Systems.

SERVICE INFORMATION

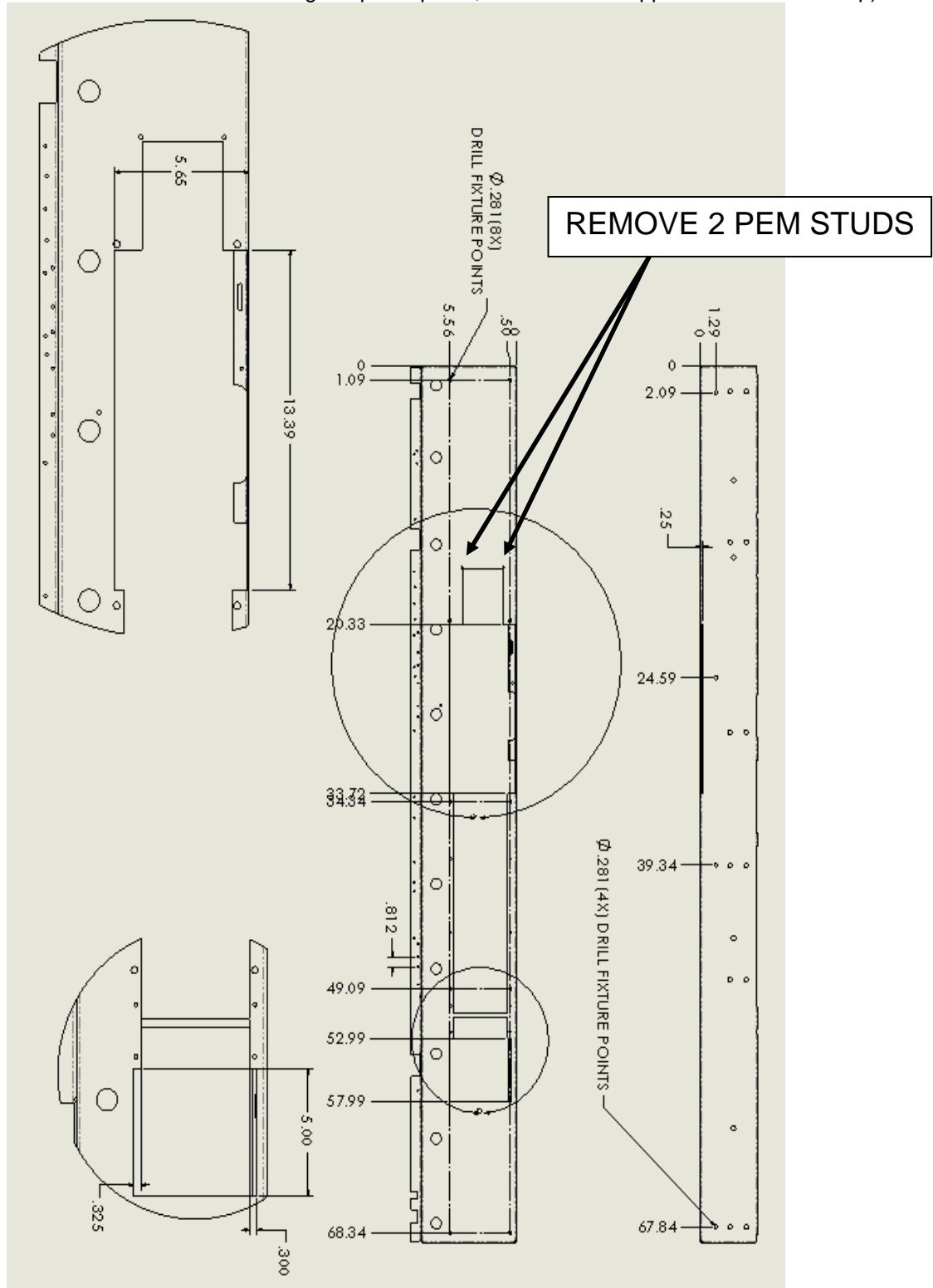
Items required for component relocation in a Magnum Circular Door to be 2012 ADA compliant:

1. Disconnect Main Power from machine.
2. Remove all components inside of control box area.
3. Remove Select Panel Assembly.
 - a. Carefully remove Light Bulbs & light boots from machine.
 - b. Disconnect select panel harness making note of which wire connects to which switch.
 - c. Disconnect and move any other harnesses that are routed behind select panels. Select panel has to be removed from backside of Main door.
 - i. Note: The E-lock light pipe has to be removed in order to slide out select panel Assembly on left side panel.
 - d. Remove the 6 fasteners that hold the select panel in place. There will be two (2) ¼-20 hex nuts located at the top, two (2) ¼-20 bolts in the bottom, and two (2) 8-18 phillips screw in the control box side of the panel. See Picture next page.
4. Use a Cut off wheel or Plasma Cutter to cut the door frame. Operators should be trained to safely operate a Cut off wheel or Plasma Cutter before attempting this step.
 - a. These two areas shown in diagram need to be cut out to make room for the components being lowered to meet ADA. Cut off wheel or Plasma cut as required, the next page will show locations to perform the necessary cuts for material removal. Note: This will require the two pem studs above the validator opening to be removed.



SERVICE INFORMATION

- 5. See below drawing for required openings to relocate components, no fixture is supplied for these openings (also shown are hole locations for mounting the patch panel, drill fixture is supplied in kit for this step).

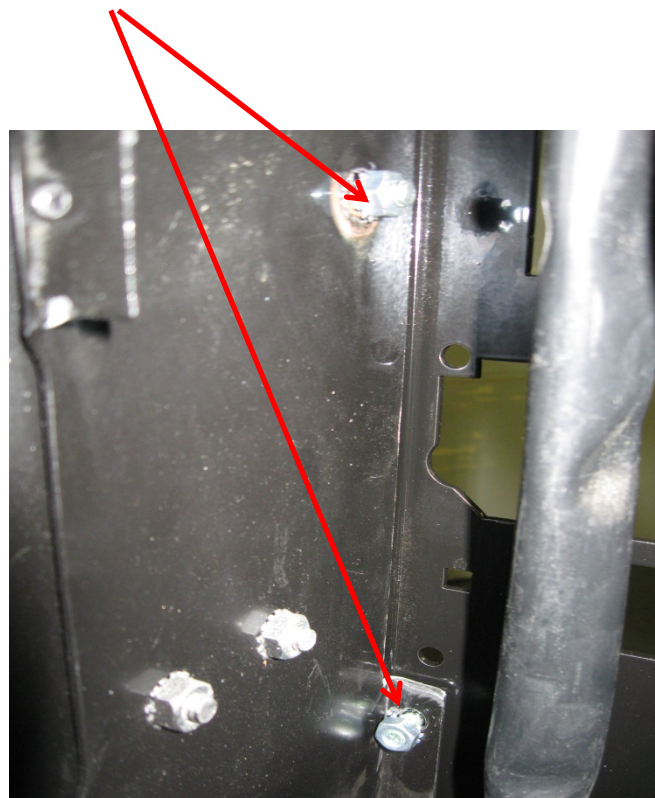


SERVICE INFORMATION

6. Locate the drill fixture (CR0014806) to either the top edge or bottom edge of the main door and clamp in place.
7. Drill out the 14 locations noted on fixture with a .277 (J) drill bit.

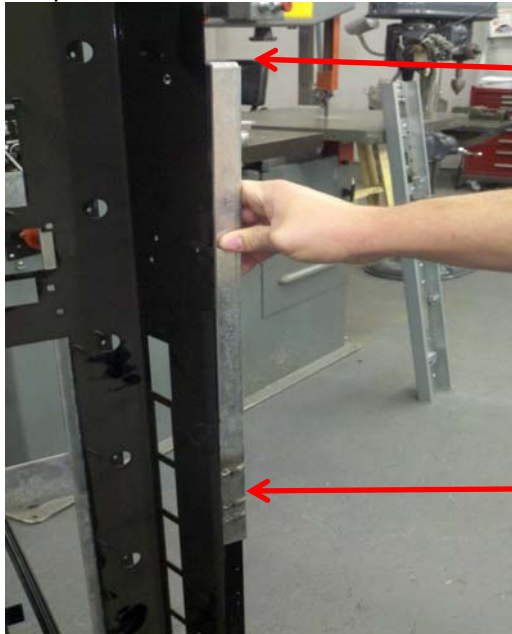


8. Install patch plate (CR0014802).
 - a. Secure patch plate with 1/4-20 carriage bolts (80020245 – qty 4) and 1/4-20 hex nuts (80080157 - qty 14) supplied.



SERVICE INFORMATION

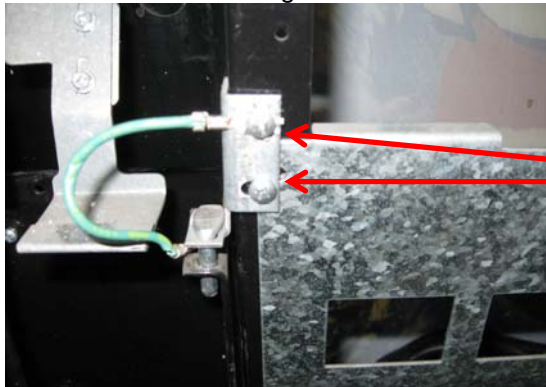
9. Place the drill fixture to relocate the coin mech housing hinges and power interrupt switch bracket in position as shown.



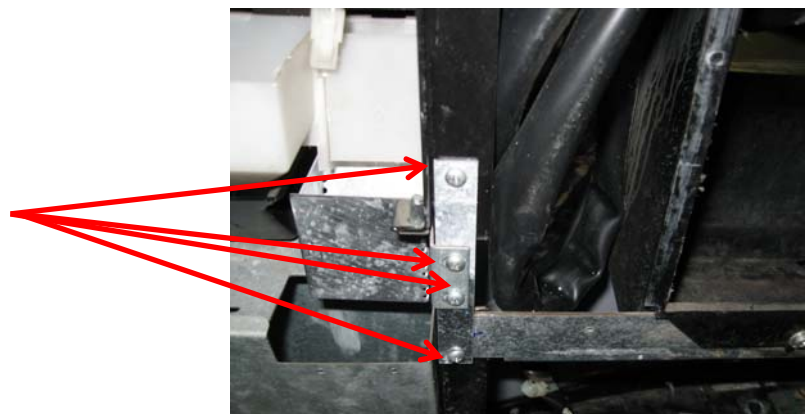
Align the fixture (CR0016260) as shown using the existing cut out in the door. Edge shown is closest to lamps.

Drill the 3 locations shown with a .120 (31) drill bit.

10. Remove the existing hardware in the door stiffener and install the upper coin mech door hinge.

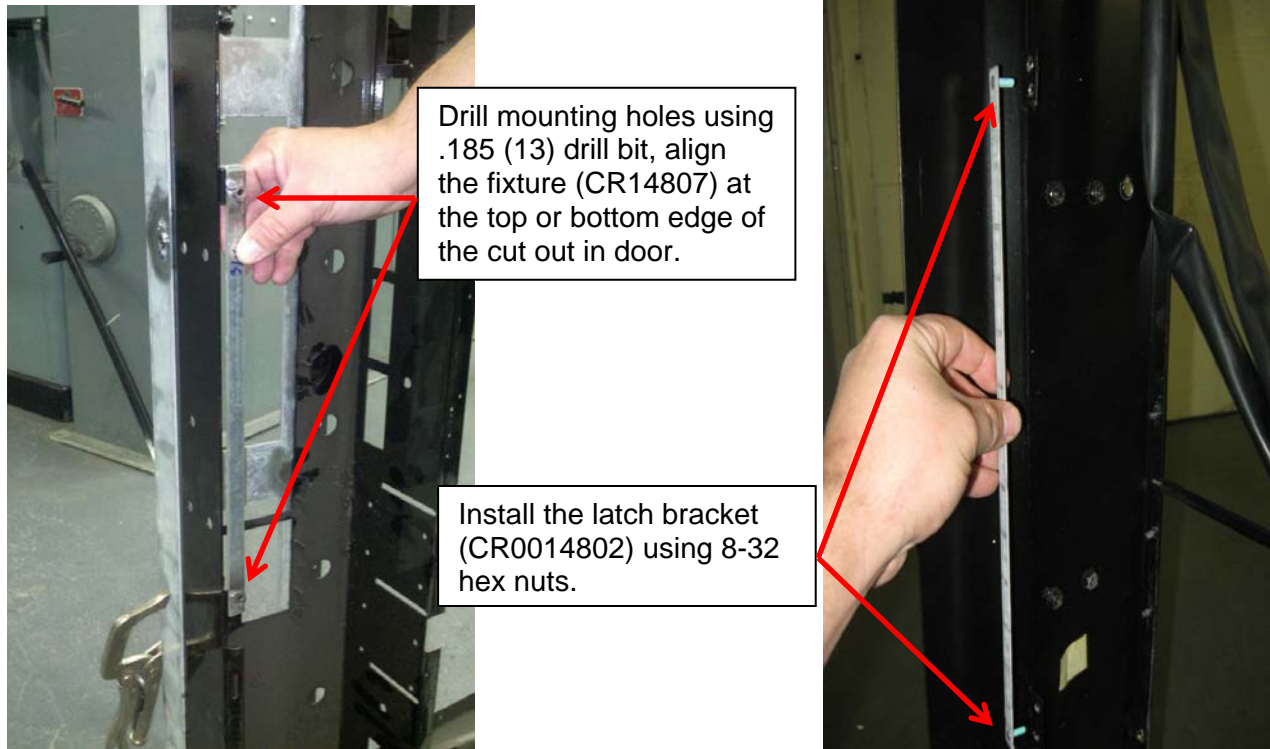


11. Remove the existing hardware in the door stiffener, then install the lower hinge plate and lower hinge as shown.



SERVICE INFORMATION

12. Locate and mount the new coin mech latch (CR0014802).



13. Relocate the T-handle opening in the inner door 8" below the existing hole using a 1.375" hole Saw bit.



SERVICE INFORMATION

14. Relocate the Nut Retainer Housing Assembly.
 - a. Remove the motor cover.



Remove the existing nut housing assy. and install the new retainer relocation tap plate (CR0014780) as shown with existing hardware.

Drill the remaining five (5) holes in the lower half of the tap plate using a .219" (7/32) drill bit through the inner tank wall only.



Use one Bulbex rivet (19609043) in lower back location drilled closest to stack.

SERVICE INFORMATION

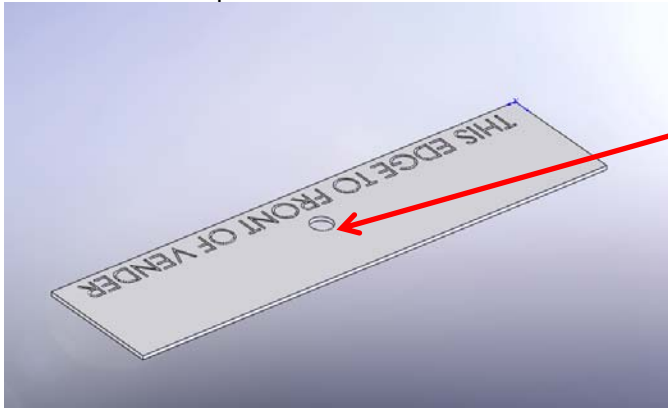
15. Route the main harness as shown



Relocate the Door Harness bundle as shown

Note: Previously the Door Harness bundle was routed at bottom of the control box instead of the bottom of sign area as shown in diagram.

16. Installation of port riser.



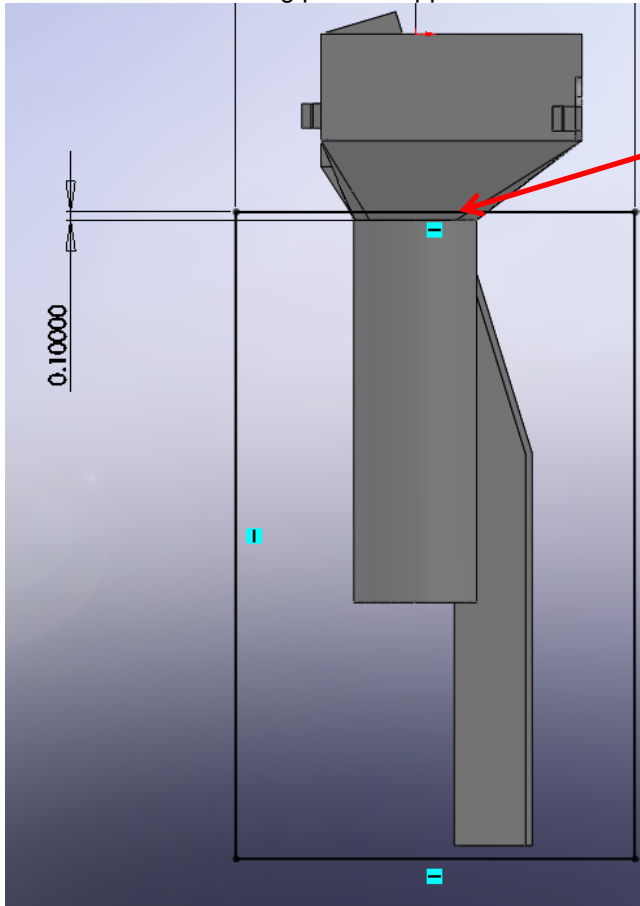
Insert drill fixture (CR0015110) in bottom of port. Using a .302 (N) drill bit drill a hole central.

Install port riser (CR0014895) and secure at bottom of port with 1/4-20 hex nut.

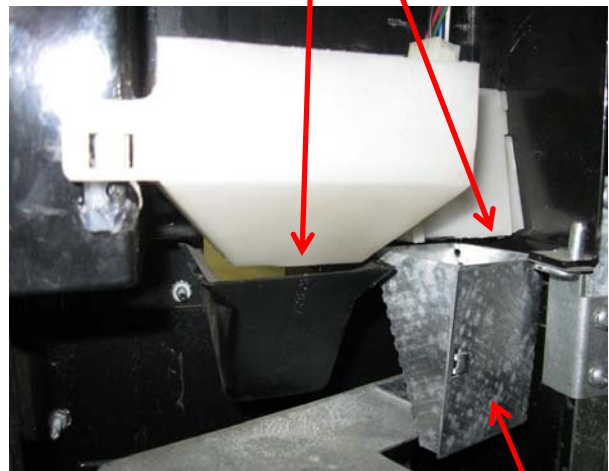


SERVICE INFORMATION

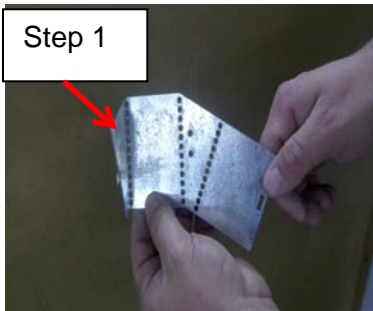
17. Remove the existing plastic hopper & chute.



Remove the lower portion of the tube and chute as shown. Cut to be located .100" above the bottom of the hopper as shown in diagram.



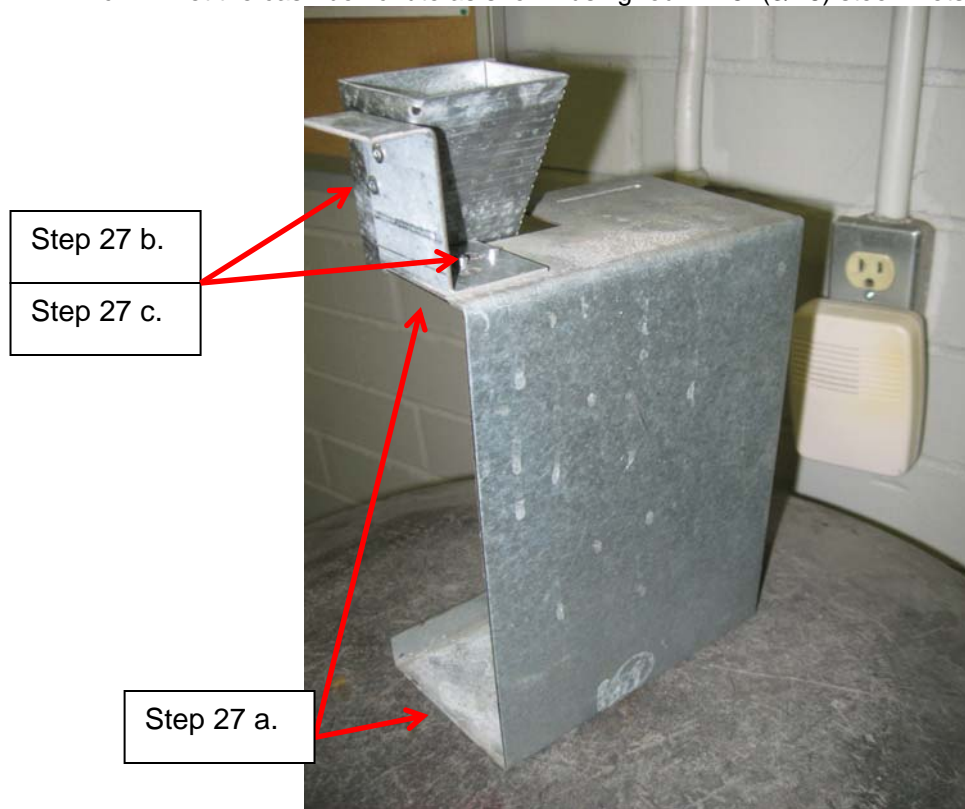
18. Form the new cash box hopper (CR0014954) as shown.



SERVICE INFORMATION

19. Cash box shelf modification.

- a. Remove flanges as shown in diagram.
- b. Align the CR0014949 support bracket along front and side edges of the cash box shelf. Drill four holes as shown using a .199 (8) drill bit.
- c. Rivet the cash box chute as shown using four .125" (3/16) steel rivets (80110079).



20. Install the Cash Box mounting bracket.



Use the existing slot in the door frame to insert the Cash Box Shelf in the control box. Note: slot is hidden by chute.

CRANE[®] MERCHANDISING SYSTEMS

SERVICE INFORMATION

Use a #8 self drilling screw (80030418) to secure Cash Box Shelf to door frame.



21. Carefully install any remaining components removed in steps 2 & 3.



22. Plug in vender and test for proper operation.